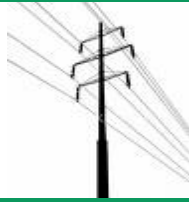




This institution is an equal opportunity provider and employer.



CATSKILL HI-LINE

Newsletter-April 2025

Message from the desk of CEO John Gasstrom

Welcome April, and all of your constantly changing weather. We hope that your spring showers will certainly bring May flowers for us soon.

As the weather warms, and we start to clean up in and around our homes, it is a great time to look for home energy efficiency projects that can help us save energy this summer and into next winter. Do you still have compact fluorescent bulbs, or even old incandescent bulbs, in those covered light fixtures? Now may be the perfect time to refresh them with energy efficient LED bulbs. Did you feel a draft near your window all winter? It might be a good time to replace seals or add weather stripping.

Many of us (myself included) saw higher than normal energy bills this winter. And the best way to manage your energy bill is to have a good understanding of how you utilize and consume energy in your home.

I want to thank all the members who came to our first **Member Question and Answer** session of 2025 last month at the Public Safety building in Delhi, as we had very good discussions about the way the cooperative consumes energy, and how each Member contributes to our overall usage profile.

In years past, we would have one Member Q&A session each year, in the middle of the Annual Meeting. Now, we are holding several sessions throughout the year and dedicating more time to being able to interact with you and address any questions you have about your electric cooperative. I spoke at this last session about some methods that the Cooperative has been looking at to

control our system-wide energy use over time, or what is commonly referred to as our load profile. We are evaluating options such as using batteries to help smooth our peak, and different types of controllable loads we can develop programs for.

Our current load control program utilizing electric water heaters will be going away, and we hope to be announcing our new program(s) soon. If you currently receive a monthly bill credit for the water heater program, that will cease with the May billing cycle. Stay tuned for more information on new programs as we continue to develop programs that serve the membership.

Finally, please be aware that the Nominating Committee is currently seeking a candidate for Central Region Director. The Central Region includes the towns of Bovina, Delhi, Franklin, Hamden, Kortright & Meredith. We thank our Nominating Committee members Eddie Pick, Lindsey Gardepe, Seth Blocker, Molly Oliver and Randy Tweedie, for serving on the committee. Remember, if you or someone you know would like more information about running for a Director position, please contact annualmeeting@dce.coop for more information.

Cooperatively Yours,

John Gasstrom



Powering Our Rural Communities

HA 4-56-8

5 North Depot Street
PO Box 471
Delhi, NY 13753

AUTOMATED LINE (payments & outage reporting): (855) 939-3672
Office Phone: (607) 746-2341
Fax: (607) 746-7548

DCEC is Proud to be Partnering With SUNY Delhi in an Effort to Preserve Native Ash Tree Seeds

As our members are aware, ash trees have been under attack by the Emerald Ash Borer beetle, devastating ash tree populations. For your Cooperative, the damage from the beetles has caused much more effort for our tree crews to try and proactively remove infested and dead trees from our Rights of Ways.

While the infested, and dead trees numbers still continue to rise, and effort to preserve the multiple ash tree species native to NYS is under way. Our partnership with SUNY Delhi is a project we're most proud of as Professor Tessier and students work throughout our county to collect ash tree seeds to create a seed bank. The hope is that one day when this devastating attack is over, and when it is safe to do so, there will be seeds to repopulate the ash tree in our area.

How can you help?

Seeds will be collected from trees within our Right-of-Way. However, if your property has healthy ash trees, and you are open to having students collect seeds from your trees, let us know! Members permitting access to ash trees for collection will greatly help to work towards conserving our native forests.

Identifying Ash Trees:

White Ash trees are the most common in our area.



Bark 20 cm

***Fraxinus americana* L.**

White Ash

Tree to nearly 40 m tall with a massive trunk to 2 m diameter; bark rough, the ridges and furrows forming prominent diamond pattern; twigs and rachis essentially glabrous, the leaf scar crescent-shaped with tapering, curled tips; leaves 20–40 cm long, the leaflets 7–9, ovate or lanceolate, 10–15 × 6–10 cm, chartaceous, whitened below, crenate or toothed; samaras 2.5–5 cm long and 3–6 mm wide, the wing extending less than 1/3 length of the plump, cylindrical seed body; calyx persistent. This is the largest Ash of the northeastern U.S. White Ash is characterized by the usually glabrous twigs and thin leaflets, whitened beneath. White Ash usually grows in rich, moist upland soils of uplands and lowlands. IUCN Status: Critically Endangered.

White ash
(*Fraxinus americana*) seed



Photo courtesy: Keith Kanoti, Maine Forest Service, Bugwood.org

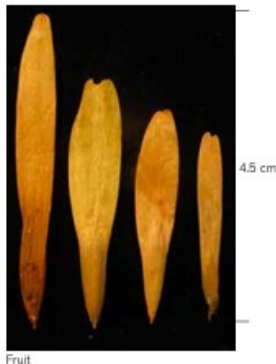


Leaf 20 cm

FR 1-93-2A



Twig



Fruit



#ThankALineworker

When the weather causes an outage, lineworkers respond to restore power as safely and quickly as possible. Even in normal conditions lineworkers maintain the safety and reliability of our electrical infrastructure. Line Crew and Tree Crew members are at the heart of our safe and reliable service to members. We thank our DCEC dedicated crews for all that they do!



We salute all DCEC Line Crew & Tree Crew members and their families who support them striving to keep you, your families, and businesses in the light.

Reminder: Monthly Service Charge Changes Occurring in May 2025

KO 1-89-7D Proposed Rate Revision Time Table	
Last Rate Increase	April of 2016
Cost of Service Study Completed	August of 2022
Proposed Rate Revisions Announced to Membership	February of 2024
Member Public Hearing Meeting Scheduled	Tuesday, March 19, 2024 @ 7pm
Board of Directors to Finalize Service Charge Revisions at Regular Board Meeting	Tuesday, March 26, 2024
1st Service Charge Revisions are Applied to Member Bills	May of 2024
2nd Service Charge Revisions are Applied to Member Bills	May of 2025
Rate Redesign	2027

DCEC is Committed to Helping Members During Financial Hardships

DCEC encourages members currently struggling to meet their monthly payment obligation to contact the local agencies listed below for payment assistance.

1. Contact DCEC's Billing Department to set up payment arrangements: 1-607-746-2341
2. Contact your local County Social Service program:
 - a. Delaware County 1-607-832-5300
 - b. Schoharie County: 1-518-295-8334
 - c. Otsego County: 1-607-547-4200
 - d. Delaware Opportunities provides assistance through certain agencies and can be reached at 1-607-746-1600
 - e. Home Energy Assistance Program (HEAP) Hotline: 1-800-342-3009

DCEC can provide supporting documentation regarding your account to these agencies that can assist in expediting your application.

HEAP Benefits

The New York State Home Energy Assistance Program (HEAP) provides payment assistance for income eligible residents to use towards the 2023-2024 heating season. This year's regular HEAP benefits opened November 1, 2023. For eligibility, income guidelines, and how to apply contact your local Department of Social Services or the NYS OTDA Hotline at: **1-800-342-3009**

Additional information is provided on:
<https://otda.ny.gov/programs/heap>



Is Your Service Location Number in This Issue?

Your service location number begins with two letters and is located on your bill next to your account number. Keep your eyes peeled for the "hidden location number" in this newsletter! If you find the number, and it is your service location, call us at (607)746-2341 and you will receive a \$10 bill credit! You must call within 60 days of publication—there are FOUR numbers in this newsletter, go and find 'em! **Good luck!**

ME 1-68-9D



CATSKILL HI-LINE is a Publication of the Delaware County Electric Cooperative, Inc. and is published bi-monthly for the membership. This newsletter has articles, content, and photos submitted by Manager of Cooperative Relations, Stacey Young, CEO John Gasstrom;

The information contained herein is designed to promote action and discussion among members. Statements published do not necessarily reflect the official position of the Cooperative. The information has been obtained from sources believed to be reliable, and the editor has exercised reasonable care to assure its accuracy.

Board of Directors

President.....Edward Pick Jr.
 Vice President.....Jeffrey Russell
 Secretary.....Laurie Wehmeyer
 Treasurer.....Edward Furgol
 Director.....Ross Gill
 Director.....David Krzyston
 Director.....Patrick O'Brien
 CEO.....John Gasstrom

DCEC Office Closures:

DCEC's office will be closed on:
 Monday, May 26, 2025– Memorial Day
 Friday, July 4, 2025 – Independence Day
 Monday, September 1, 2025 – Labor Day