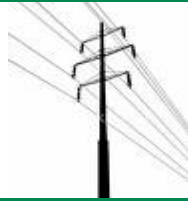




# CATSKILL HI-LINE

This institution is an equal opportunity provider and employer.



Bi-Monthly Newsletter

Volume 75—Issue 1  
January/February 2019

## Powering Our Rural Communities

### DCEC Makes Capital Credit Distribution

Capital credits represent each member's ownership of the Delaware County Electric Cooperative. They are the positive margins credited (or allocated) to the members of the Cooperative based on their purchases from the cooperative in any given year. In between the years of allocation and retirement, these margins are used by the Cooperative as capital to maintain adequate cash flow to meet current expenses and preserve enough equity to meet banks' equity requirements which lower DCEC's costs for borrowing money.

After reviewing DCEC's financial position and determining it to be sound, the DCEC Board of Directors approved payout of the 1991 allocation in the amount of \$480,075.23. Current members who were actively receiving electricity in 1991 will receive a credit on the December 2018 bill identified as "CAPITAL CREDIT REFUND". Members who are no longer receiving electric service from DCEC today but did so in 1991 will receive a check in the mail provided their refund is \$5.00 or greater.

DCEC's Board of Directors also approved for the first time, a payout of all inactive members with a capital credit allocation of less than \$75.00. This resulted in 1342 inactive members receiving their final payment of capital credits. These checks were mailed in mid-December.

To review policies and bylaws pertaining to DCEC's procedure on allocations and retirements of Capital Credits, please visit our website at <http://dce.coop/content/dcec-bylaws-policies>.

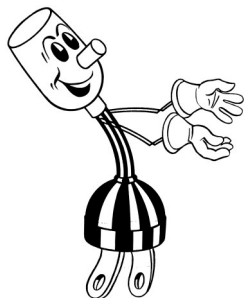
### The Cooperative Offers Some Relief to Local Dairy Farmers

Electricity came to Paul and Gwen Deysenroth's farm, aka Byebrook Farm, in the early 1940s when owned by her grandfather, Edward Nichols, but it was not from the Cooperative. Though DCEC put a small and later a larger substation on the farm, the farm and house received their power from NYSEG until 1997, when several farms in the area, including the Deysenroth farm, were allowed to connect their barns and other farm buildings to the Cooperative.

Gwen Deysenroth has a long-term family connection to the Cooperative. Her grandfather was Anker Norberg, who was one of the founding directors of the Cooperative. Her uncle Niels Norberg was a director from 1953-1987 and was Vice-president from 1978-1987. Her family has a longer connection to Byebrook Farm. It was originally the Lamb farm, leased in 1787 by Gwen's ancestor Patrick Lamb, an Irish immigrant. He was the first supervisor in the town of Stamford (Gwen's father, Howard Nichols, also was town supervisor in Stamford). The Lamb family was able to buy the farm in the 1840s after the dust settled from the Anti-Rent War. From the Lamb family, the farm came down to the Nichols family.

Gwen and her husband Paul took over the farm in 1985 from her father Howard and Uncle Edward Nichols. The next generations of the family also now work on the farm. Their son Dennis and his wife Sami also live and work on the family farm, while their sons Paul and Dan and their families help with the haying in the summer.

*Continued on Page 5...*



## DCEC's 2019 Annual Meeting will be on September 20, 2019 at 4:30 pm in Delhi, NY



# DCEC's Family Fun Day



LIVE Band, Games, Crafts,  
Bounce Houses  
**FUN FOR ALL AGES**

August 3, 2019, 2 pm—5 pm  
Courthouse Square in Delhi  
**FREE ADMISSION**

## Who Is Sneaking Around in My Back Yard?

When your neighbors' lights go out, the Cooperative's line crew may need to troubleshoot and fix the root cause of the outage on your property, even if your lights are still working fine. How is that possible? The Cooperative's electric distribution network has up to three separate "hot" conductors at any particular point in the distribution network. We refer to the three hot conductors as "phase A," "phase B," and "phase C." If some of your neighbors are connected to phase A and you are connected to phase B, their service could be interrupted by a problem with the line while your service is still working just fine. However, the problem could still be in your back yard.

So, if you see guys walking through the right-of-way with flashlights when your lights are working, don't be alarmed, it could still be our linemen restoring power for your neighbors.





# Electric Cooperative Youth Tour 2019

*Investing today in the leaders of tomorrow*



**\*\*Attention High School Juniors\*\***  
**Enter to win a FREE TRIP**  
**to Washington D.C.**  
 for more information see below or visit our website at  
[www.dce.coop/content/2019-legislative-youth-tour](http://www.dce.coop/content/2019-legislative-youth-tour)

## Hurry Deadline is March 5, 2019

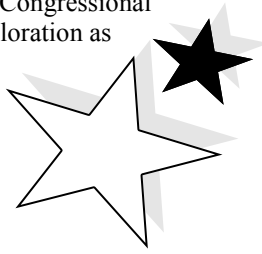
### DCEC is Accepting Applications for the 2019 Student Delegate

Do you know an 11<sup>th</sup> grader within DCEC's service area that would be interested in participating in an all-expense paid trip to Washington D.C.? The Cooperative is looking for a student delegate to attend the National Rural Electric Cooperative Association's (NRECA) Legislative Conference in Washington, D.C. This trip will include interaction with key people from around the country working in a field critical to the world's security, economy, and future – energy. DCEC representatives and the selected 11th grader, will travel to Washington, DC on Sunday, April 28, 2019 and return to Delhi on Wednesday, May 1, 2019. They will join over 3,000 Cooperative leaders from more than 40 states, representing over 900+ rural electric cooperatives. The student will make visits to Capitol Hill Congressional Members and/or their staffs from New York State. Plenty of time will be reserved for educational exploration as well.



In order to be considered, students must meet the following qualifications:

- Be in their junior (11th grade) year
- Be a son/daughter of a member of the Delaware County Electric Cooperative
- Have at least a "B" average or better
- Participate in extra-curricular activities and community service



Students interested in being considered for this event must complete the application below and submit it to the office by noon on **March 5, 2019**. Applications can either be sent by regular mail or emailed to: [alicia.vanzandt@dce.coop](mailto:alicia.vanzandt@dce.coop).

A completed application must include:

- Completed application form (see below).
- 1-page student essay describing yourself (including where you go to school, favorite subjects, extra-curricular activities, and community service you have been involved in) and what you hope to get out of participating in the trip.
- Letter of recommendation from a teacher or administrator from your school, including your academic transcript showing an academic standing of at least a "B" average or above.
- Attach a copy of your family's DCEC electric bill proving their membership in the Cooperative.
- Be available to meet with the DCEC General Manager and Board on March 26th at the March Board Meeting.



*"The Delaware County Electric Cooperative has helped me recognize the importance of being apart of a small family oriented community. As well as reassuring me that I am a young leader that has a bright future in the Co-op world."*

*-Anna Post, 2018 Student Delegate*

**Application**



Student's Name: \_\_\_\_\_

School: \_\_\_\_\_

Service Address: \_\_\_\_\_

Account Number: \_\_\_\_\_

Phone Number: \_\_\_\_\_

Email Address: \_\_\_\_\_

Name of Parent or Guardian: \_\_\_\_\_

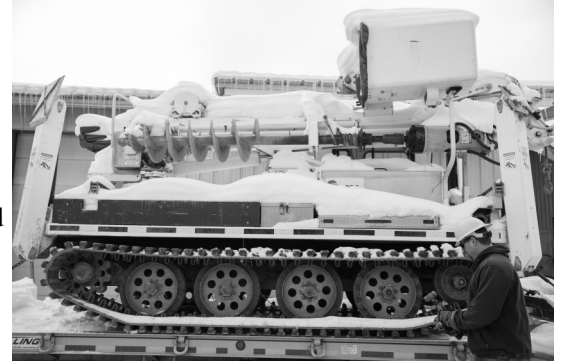
\_\_\_\_\_

## Property Access – Thank you Landowners

The Cooperative maintains 800 miles of distribution lines across four counties in order to provide electric service to 5,387 homes and businesses. Those distribution lines run across thousands of properties owned by thousands of different landowners. On behalf of the Line Crew and Tree Crew members who perform daily maintenance and storm restoration, thank you to all the landowners who support their work by allowing access to our rights-of-way through driveways, farm roads, fields, and yards. Without you allowing them to cross your properties to access our rights-of-way, maintenance and restoration of the electric system would be impossible. Various obstacles prevent our workers from traveling directly down the rights-of-way:

- Natural features such as waterways, rock ledges, and gorges
- Stone walls
- Livestock fences

For this reason, it is often necessary for Cooperative crews and equipment to pass through private property outside of the easement area in order to accomplish their work. Thank you to all those landowners who continue the long tradition of allowing Cooperative crews to pass through your property. If the Cooperative creates ruts or other impacts to your property in the process of doing our work, we are responsible for repairing the damage and returning your property to it prior condition. If you have ruts or other damage on your property, call CEO/General Manager Mark Schneider at (607) 746-9282 to arrange for repairs.



## Dangers of Unauthorized Pole Attachments

Do you have a satellite dish, bird feeder, clothes line or any other kind of unauthorized attachment to the Cooperative's utility pole near your house? If you do, you are not alone. Unfortunately these unauthorized attachments pose a threat to the safety of line workers when they must climb a pole to perform maintenance or restore power after a storm. Under OSHA regulations enacted in 2014, a line worker needs to utilize a fall restriction device that wraps around the pole as he climbs. Each time a line worker reaches an unauthorized attachment, he needs to remove the fall restriction device from the pole to climb past the obstruction, placing the worker at increased risk for a fall. Please do your part to keep our workers safe. If it can be done safely, remove any unauthorized attachments from the utility poles near your home. If you need help removing an attachment or you don't know whether an attachment is authorized, call the Cooperative's office at 607-746-2341. We would be happy to assist you.

## Does DCEC Have a Key To Your Gate?

The Electric Cooperative recognizes the importance of protecting your properties and limiting access to them by means of gates or chains. What we encourage our Cooperative members to do is to provide us with keys to your properties so that we can access them in the event of a power outage or to perform routine maintenance. Many property owners have provided us with keys or lock combinations to allow us access when we need it.

Often times we come up on a new chain or gate and have no means to gain access except to remove the gate or cut the chain to access the

property. In these circumstances we remove the gate if possible or cut a link from the chain and install a repair link in its place when we leave.

If you're a new property owner or an existing DCEC member that has installed a gate or chain please contact us at (607) 746-2341 in regards to providing us with a key. This would be beneficial to both of us in the event of an emergency.

Visit  
[www.dce.coop/wethepeople](http://www.dce.coop/wethepeople)

Each Member  
has a Voice



Learn What  
it Means to  
be a  
Member  
of this  
Cooperative

## The Cooperative Offers Some Relief to Local Dairy Farmers...Continued from Page 1...

While the farm continues to be a dairy farm, the Deysenroths have expanded the operation over the years. Their farm stand sells fresh bottled raw milk, brown eggs and raw milk Gouda cheeses, as well as Bread Fellows breads, Jordan Palmer's maple products, Wharton Hollow honey and baked goods from the Farmers' Wife. Byebrook Gouda is also available at local stores, the Delhi Farmers' Market, and is on the menu at Brewery Ommegang and Origins Cafe.

The Deysenroth's cheese operation started nine years ago when the family was first approached by the Watershed Agricultural Council (WAC). The Byebrook Farms Gouda cheeses were a way for the family to diversify their farming operation, helping to ensure that the farm stays in the family for future generations. For several years, they had to transport their milk to Cooperstown and make their cheese there but last year were able to establish a cheese plant on their farm, saving the transport to Cooperstown.

Early in their membership in the Cooperative, the Deysenroths needed some unusual help. In May 1999, their cat Willis went missing and after two days someone noticed the cat was on one of the cross-arms of a DCEC electric pole. Linemen Ron Schmitz and Bob Coager went out to save him. Gwen made two apple pies to reward the linemen for their rescue of Willis. This is not something DCEC linemen normally do but given there was a threat to the power source, the cat needed to be rescued.

Paul and Gwen love dairy farming, despite the challenges facing farmers today. When they got the notice about the Cooperative's new dairy rates, Gwen's first response was "somebody cares!" The Deysenroths are determined to keep their farm going for future generations. They appreciate the Cooperative's support of their efforts and their support of dairy farmers.

- Written by Ray LaFever



### **DCEC Announces NEW Dairy Farmer Rate**

Our local dairy farmers were the founders and the backbone of this Cooperative for our first 75 years, and today they are struggling under the weight of poor milk prices and high production costs. The Cooperative will have a new Dairy Farm rate starting in January of 2019. Eligible members will be those who:

- Ship milk as demonstrated by regular pick-up by a bulk tanker or as demonstrated by a current contract with a wholesale milk purchaser
- Are family owned,
- Utilize a minimum of 3,000 kWh per month (average)

The new rate will save dairy farms approximately 2 cents/kWh, so the typical dairy farm will save approximately \$70 per month. The Cooperative appreciates all of our dairy farm members, past, present and future. We hope that dairy farms will continue to play an important role in shaping the Cooperative.







## 2019 Board of Director Nominations & Nominating Committee

*As a democratic organization, Cooperative members vote each year to elect directors to represent them on the DCEC Board. Elections for director positions occur at the DCEC's Annual Meeting in September. DCEC currently has 7 directors representing three regions of the DCEC's service territory (see DCEC Board Regions chart below). Directors serve 3-year terms. In accordance with the DCEC bylaws, a Nominating Committee considers members interested in serving on the board and nominates candidates for the election. If you are a member of the Cooperative, at least 21 years old and are interested in being a candidate, or if you would like additional information, please contact the DCEC office.*

In accordance with DCEC bylaws, the Nominating Committee must prepare a list of candidates for membership consideration at least 60 days prior to the Cooperative's Annual Meeting. The 2019 Annual Meeting of the Members is scheduled to be held **September 20, 2019 at 4:30 p.m.**

Elections will occur at the 2019 Annual Meeting for two board seats representing the central region.

<u>Region</u>	<u>Current Director</u>
Central Region	Steve Oles
Central Region	Steve Burnett

The Nominating Committee will meet from April through June at the DCEC office at 39 Elm Street, Delhi, for the purpose of identifying candidates for the above positions. The committee must be comprised of between 5 and 11 members representing the geographic diversity of the DCEC service area. Members serving on the committee are offered a modest stipend for their service. If you are interested in serving on the Nominating Committee, please contact the DCEC office at (607) 746-9299.

Nominations for directors are governed by Article 4 of the Bylaws. A director may be nominated either through:

- 1) The **NOMINATING COMMITTEE**. The Nominating Committee meets to identify at least two candidates to run for each seat up for election.
- 2) The second way is by **PETITION**. Any 15 or more members may petition the Cooperative to place a qualified member on the ballot. This must be done at least 45 days before the Annual Meeting.

Rules regulating director elections are outlined in DCEC's bylaws, which are available on: [www.dce.coop/content/dcec-bylaws-policies](http://www.dce.coop/content/dcec-bylaws-policies). Voting for directors is covered by Article 3. Each member may cast one ballot for a nominee for each seat up for election. ***A married couple holding a joint membership are considered one member and will receive one ballot.***

DCEC would like to thank the members who served on the 2018 Nominating Committee: Committee Chair Christine Hauser (Stamford), Carol LaTourette (Sidney Center) Thomas Courtenay-Clack (Jefferson), Jason Mondore (DeLancey), Troy Tucker (Delhi), Kurt Athorpe (Delhi), Steven R. Mason (Delhi), and Joseph

Carroll (Harpersfield).

### **Board Regions**

**Northern Region:** Towns of Gilboa, Jefferson, Summit, Davenport, Harpersfield, Stamford and Maryland

**Central Region:** Towns of Bovina, Delhi, Franklin, Hamden, Kortright and Meredith

**Southern Region:** Towns of Andes, Colchester, Masonville, Middletown, Sidney, Tompkins, Walton and Bainbridge

## Congratulations to



## Gail Pedri

*the Winner of the iPad Mini giveaway*

### **Member Wins iPad Mini**

Back in January of 2018 DCEC start advertising that if a member signed up for AUTO PAY they would be entered to winner an iPad Mini. Congratulations to Gail Pedri of Gilboa, she is the lucky winner of 2018. She is now able to use her iPad Mini in the comfort of her own home thanks to Margaretville Telephone Company (MTC) and her new broadband service.

For more information about promotional giveaways please visit [www.dce.coop/](http://www.dce.coop/).

## Co-op Members & Employees Donate to Delhi Food Bank & Local Families within Schoharie County

This is the time of year for charitable giving. Every year for Christmas DCEC employees, retirees, and the Board of Directors donate toys toward a local toy bank within the DCEC service territory. For 2018, the Cooperative chose local families within Schoharie County. All donated gifts were given to children residing within DCEC service territory within Schoharie County. We hope the toys were a

welcome sight to those children on Christmas morning. We look forward to donating to more local families again next Christmas season! If you would like to suggest a local toy bank or local food bank for 2019 donations please contact Administrative Assistant Alicia VanZandt at (607) 746-9299 or send an email to [alicia.vanzandt@dce.coop](mailto:alicia.vanzandt@dce.coop).



This year DCEC members and employees also donated to the Delhi Food Bank. All donations were delivered to the Delhi Food Bank on December 20th 2018. The Delhi Food Bank depends upon the support of a generous community to operate.

**DCEC would like to thank all those that have donated and are making a difference!**



## Statement of Non-Discrimination

Delaware County Electric Cooperative, Inc., is an equal opportunity provider and employer.

In accordance with Federal civil rights law and U.S. Department of Agriculture (USDA) civil rights regulations and policies, the USDA, its Agencies, offices, and employees, and institutions participating in or administering USDA programs are prohibited from discriminating based on race, color, national origin, religion, sex, gender identity (including gender expression), sexual orientation, disability, age, marital status, family/parental status, income derived from a public assistance program, political beliefs, or reprisal or retaliation for prior civil rights activity, in any program or activity conducted or funded by USDA (not all bases apply to all programs). Remedies and complaint filing deadlines vary by program or incident.

Persons with disabilities who require alternative means of communication for program information (e.g., Braille, large print, audiotape, American Sign Language, etc.) should contact the responsible Agency or USDA's TARGET Center at (202)720-2600 (voice and TTY) or contact USDA through the Federal Relay Service at (800)877-8339. Additionally, program information may be made available in languages other than English.

To file a program discrimination complaint, complete the USDA Program Discrimination Complaint Form, AD-3027, found online at [http://www.ascr.usda.gov/complaint\\_filing\\_cust.html](http://www.ascr.usda.gov/complaint_filing_cust.html) and at any USDA office or write a letter addressed to USDA and provide in the letter all of the information requested in the form. To request a copy of the complaint form, call (866) 632-9992. Submit your completed form or letter to USDA by:

mail:  
U.S. Department of Agriculture  
Office of the Assistant Secretary for Civil Rights  
1400 Independence Avenue, SW  
Washington, D.C. 20250-9410

fax: (202) 690-7442; or  
email: [program.intake@usda.gov](mailto:program.intake@usda.gov)

USDA is an equal opportunity provider, employer, and lender.

## 2019 Board Meeting Schedule

January 22, 2019, January Board Meeting  
 February 26, 2019, February Board Meeting  
 March 26, 2019, March Board Meeting  
 April 23, 2019, April Board Meeting  
 May 28, 2019, May Board Meeting  
 June 25, 2019, June Board Meeting  
 July 23, 2019, July Board Meeting  
 August 27, 2019, August Board Meeting  
 September 24, 2019, September Board Meeting  
 October 22, 2019, October Board Meeting  
 November 19, 2019, November Board Meeting  
 December 17, 2019, December Board Meeting

*\*All dates are subject to change. Please call the office to confirm meeting date before attending.*

## Is Your Location Number in This Issue?

Your service location number begins with two letters and is located on your bill next to your account number. Keep your eyes peeled for the "hidden location number" in this newsletter! If you find the number, and it is your service location you will receive a DCEC fleece sweatshirt!



**Good luck!**

## 2018-2019 HEAP Monthly Income Limits

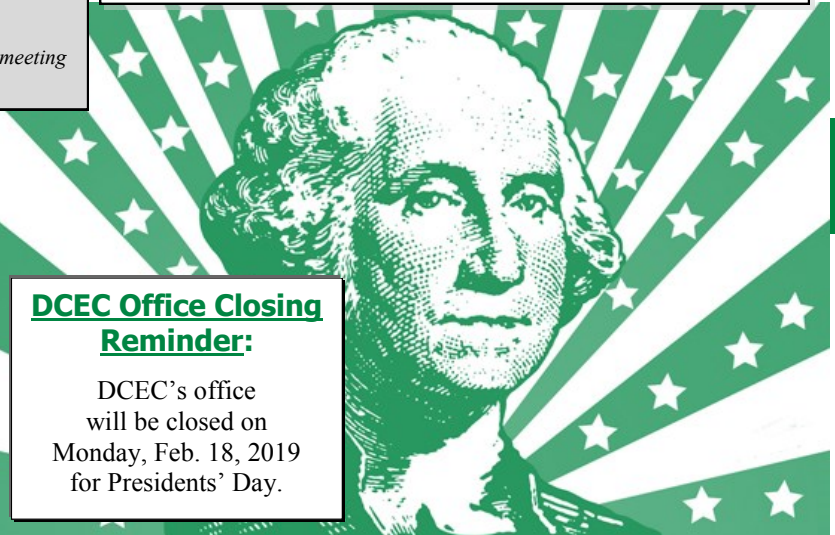
The Home Energy Assistance Program (HEAP) helps low-income people pay the cost of heating their homes. Your total household gross monthly income for your household size must be at or below the following guidelines:

### 2018-2019 HEAP Benefits Gross Monthly Income Guidelines

Household Size	Maximum Gross Monthly Income
1	\$2,391
2	\$3,127
3	\$3,863
4	\$4,598
5	\$5,334
6	\$6,070
7	\$6,208
8	\$6,346
9	\$6,483
10	\$6,621
11	\$6,918
Each additional	Add \$540

## DCEC Office Closing Reminder:

DCEC's office will be closed on Monday, Feb. 18, 2019 for Presidents' Day.



CATSKILL HI-LINE is a Publication of the Delaware County Electric Cooperative, Inc. and is published bi-monthly for the membership. This newsletter has articles submitted by CEO/General Manager Mark Schneider, Engineering & Technology Manager Paul DeAndrea, Operations Manager Ryan Sullivan, Billing Specialist Rosemary Alwine, and Administrative Assistant Alicia VanZandt.

The information contained herein is designed to promote action and discussion among members. Statements published do not necessarily reflect the official position of the Cooperative. The information has been obtained from sources believed to be reliable, and the editor has exercised reasonable care to assure its accuracy.

### Board of Directors

President.....Stephen Oles  
 Vice President.....Frank Winkler  
 Secretary.....Edward Pick Jr.  
 Treasurer.....Paul Menke  
 Director.....Jeffrey Russell  
 Director.....Laurie Wehmeyer  
 Director.....Steve Burnett  
 CEO/General Manager.....Mark Schneider

## Operations Update

ROW Crew is working on cycle clearing in Walton and Tompkins. Dryden Brook Road, Tower Mtn. Road, Fish Brook and Others.

Line Crew is working on various make ready jobs for Spectrum, MTC and DTC in Meredith, Hamden, Delhi, Harpersfield, and Walton. Planning on working on Randall Hill in Masonville.

