

A message from the desk of CEO John Gasstrom

We hope that spring has finally arrived, after a winter of brutal snow storms that had devastating impact to our system. We are very appreciative to Steuben Rural Electric Cooperative, Otsego Electric Cooperative, and Oneida-Madison Electric Cooperative, all of whom provided much needed assistance in our winter storms this year!

We also greatly appreciate the members who attended our public hearing and information session on March 19th in Delhi. It was an evening of lively discussion as I presented information about the cost increases that the cooperative has seen in all aspects of the work we do to provide you with electricity. These costs are almost entirely “fixed costs,” meaning that the costs incurred are the same regardless of the amount of energy used by the member-consumer. We presented the proposed increases to the monthly fixed charge component of electric bills which will go into effect with the May billing period.

The changes were the same for all impacted service classes, and include a \$12.75 increase in May of 2024 and a \$6.25 increase in May of 2025. Thank you again to all of the members who came to ask questions and gain greater understanding of the work we do here at your electric cooperative.

DCEC is also very excited to be leading a consortium of cooperatives across three states in trying to gain federal grant funding for reliability improvements. As we continue to see impacts from more frequent and intense storm activity, as well as the damage done by invasive species like the Emerald Ash Borer, we are looking for ways to address those challenges with innovative approaches and funding help from Uncle Sam.

Finally, I am scheduling some additional meetings to make sure we are giving all members the opportunity to ask questions and be heard. Please look for upcoming announcements on these meetings, with the first ones planned in Jefferson and Andes in the coming weeks. Information will be posted on our website at: <https://www.dce.coop/members>.

Thanks again to our members, and remember that April is Lineworker Appreciation Month, so please take a moment to thank a lineman for the critical work that they do! We celebrate Administrative Professionals’ Day on April 24th and we appreciate our hardworking office staff for their consistency keeping things running behind the scenes!

Cooperatively Yours,
John Gasstrom



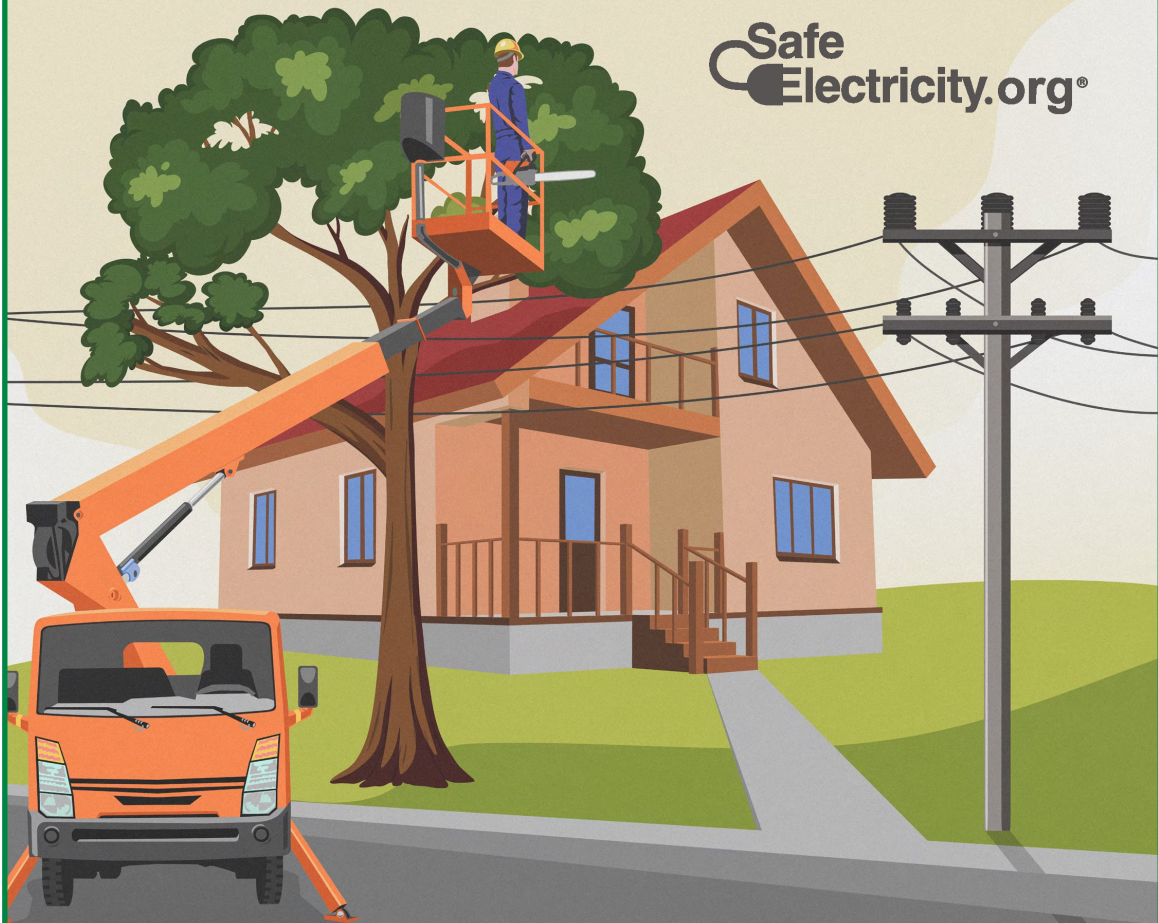
| Rate Revision Time Table | |
|--|-------------------------------|
| Last Rate Increase | April of 2016 |
| Cost of Service Study Completed | August of 2022 |
| Proposed Rate Revisions Announced to Membership | February of 2024 |
| Member Public Hearing Meeting Held | Tuesday, March 19, 2024 @ 7pm |
| Board of Directors Finalized Monthly Fixed Charge Revisions at Regular Board Meeting | Tuesday, March 26, 2024 |
| 1st Monthly Fixed Charge Revisions Applied to Member Bills | May of 2024 |
| 2nd Monthly Fixed Charge Revisions Applied to Member Bills | May of 2025 |
| Rate Redesign | 2027 |

| Service Class | Current - Monthly Fixed Charge | May 2024 - Monthly Fixed Charge | May 2025 - Monthly Fixed Charge |
|---------------|--------------------------------|---------------------------------|---------------------------------|
| SC-1 | \$22.00 | \$34.75 | \$41.00 |
| SC-2 | \$27.00 | \$39.75 | \$46.00 |
| SC-3 | \$22.00 | \$34.75 | \$41.00 |
| SC-5 | \$21.00 | \$33.75 | \$40.00 |
| SC-D | \$22.00 | \$34.75 | \$41.00 |
| SC-4A | \$40.00 | \$52.75 | \$59.00 |

TREES — TOO CLOSE FOR (YOUR) COMFORT






TREES CAUSE MAJORITY OF POWER OUTAGES

Safe
Electricity.org®






WHY DOES YOUR POWER PROVIDER TRIM TREES?

Although most trees do not present a problem, some of them grow into or crowd power lines, poles or other utility equipment and cause service issues. Unruly and overgrown trees can:

-  Cause outages.
-  Create fire hazards.
-  Break off and land on power lines.
-  Cause lights to flicker during high winds.
-  Get weighed down with ice and cause issues.

Proper pruning techniques are used to preserve tree health, although sometimes a tree must be removed. This is a last resort, but it can be necessary if there are:

-  Fast-growing trees directly under power lines.
-  Trees that are leaning into lines.
-  Trees that are declining, cracked or split.

Unobstructed power lines make it easier and safer for utility crews to repair or service lines.

 Power companies trim trees to better serve you.

Learn more at: [SafeElectricity.org](https://www.SafeElectricity.org)