

TREE PLANTING GUIDE

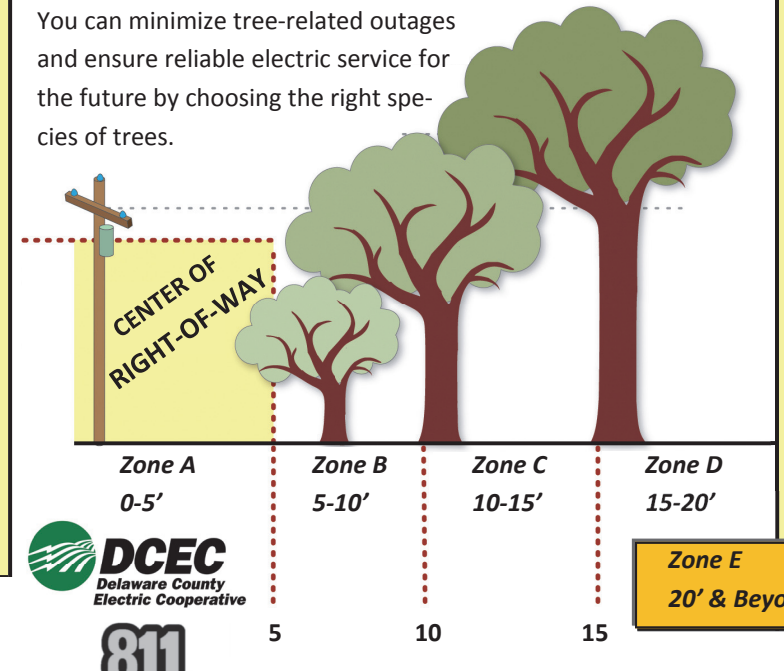
Zone	Distance from the Center of Right-of-Way	Max Mature Tree Height	Example of Acceptable Species for Zone
ZONE A	0 to 5 feet	Zero – there is a no-planting zone within 5 feet of the center line of the right-of-way.	Grass, Sedum, Dragon's Blood, Pachysandra, Wildflower seed
ZONE B	5 to 10 feet	8 feet tall	Black Chokeberry, Blue Crop Blueberry, Jersey Blueberry, Silky Dogwood, Blue Ray Blueberry
ZONE C	10 to 15 feet	15 feet tall	Common Lilac, Elderberry, Rose of Sharon, Forsythia, Arrowwood
ZONE D	15 to 20 feet	30 feet tall	Arkansas Black Apple, Red Crabapple, Red Bud, Macoun Apple, White Flowering Dogwood, Cortland Apple, McIntosh Apple, American Hazelnut
ZONE E	20 feet and beyond	N/A	American Larch, Concolor/White Fir, Native Birch, Norway Spruce, Red Oak, Sugar Maple, White Pine, White Spruce, Fraser Fir, American Arborvitae, Wild Black Cherry, Catalpa, Colorado Blue Spruce, Douglas Fir, Paw-Paw, Red Mulberry, Scotch Pine, White Walnut, FraiserXBalsam Fir, Black Spruce

Call before you dig to locate underground utilities
Call Dig Safely NY, by dialing 811 or 1-800-962-7962
Also, call DCEC at (607) 746-2341, because secondary lines are not listed with Dig Safely New York.

Planting Distances from the Center of Right-of-Way

PLAN before you plant

You can minimize tree-related outages and ensure reliable electric service for the future by choosing the right species of trees.



The following tree species have weak wood and should always be planted at distances away from the pole line that exceed the mature height of the tree:

- Alder, Red
- Athlanthus
- Australian Pine
- Basswood
- Boxelder
- Catalpa
- Poplar
- Silver Maple
- Tulip Tree (Yellow Poplar)
- Willows, including all sub-species



Annual Arbor Green Tree & Shrub Sales

The Delaware County Soil and Water Conservation District (DCSWCD)

March 16, 2018—Tree and Shrub Order Form Deadline

April 14, 2018—Tree and Shrub Handout at SWCD Office

For an order form and additional information please visit, www.dcswwcd.org

The Schoharie County Soil & Water Conservation District(SWCD)

April 3, 2018—Tree and Shrub Order Form Deadline

April 21—22, 2018—Tree and Shrub Handout at Cobleskill Fairgrounds

For an order form and additional information please visit, www.schohariesoilandwater.org/trees